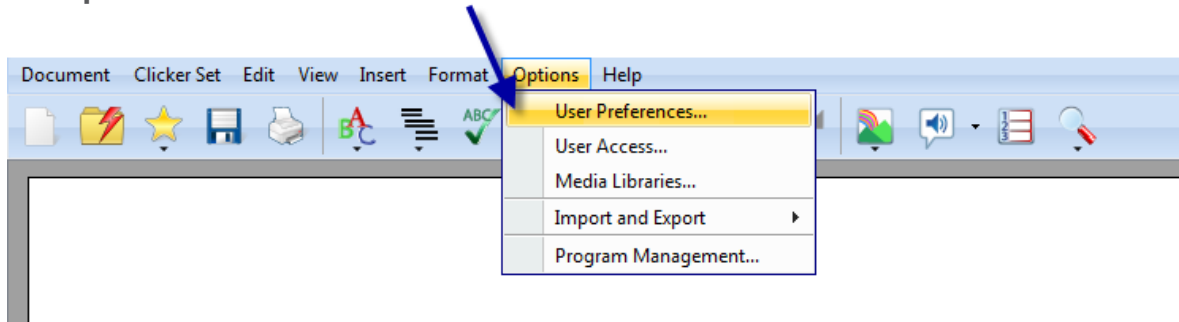


How to:

personalize the word predictor settings

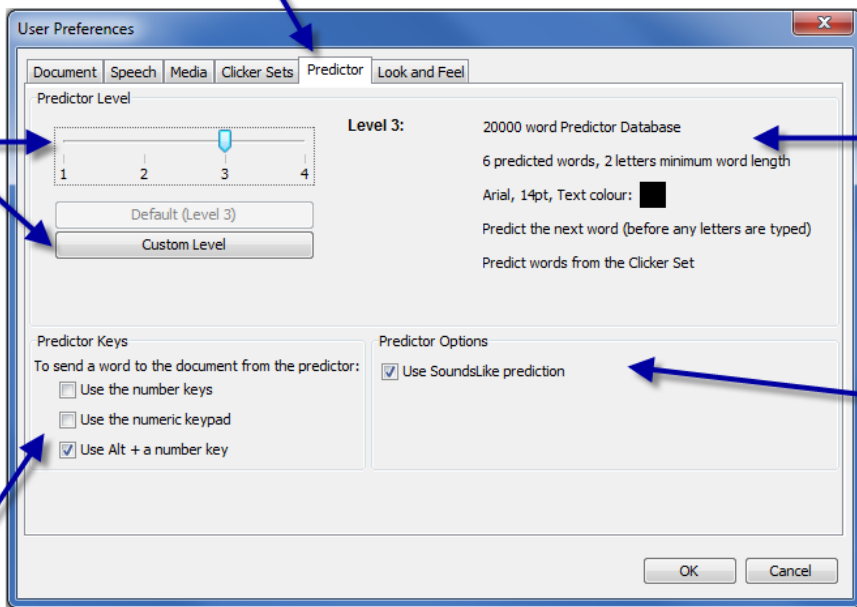
Customize the settings of the word predictor so that each student benefits from a personalized level of support.

Go to the **Options** menu and click **User Preferences**.



Click the **Predictor** tab.

Move the slider to use one of the pre-set levels or click **Custom Level** to create your own (see below).

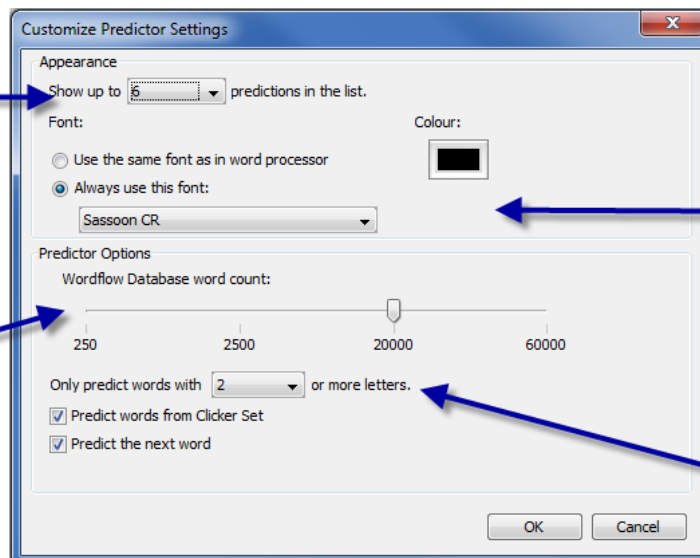


See the features of the current level chosen.

Choose if SoundsLike prediction is used.

Choose how words are sent from the predictor to the document.

Clicking **Custom Level** allows you to make the following choices.



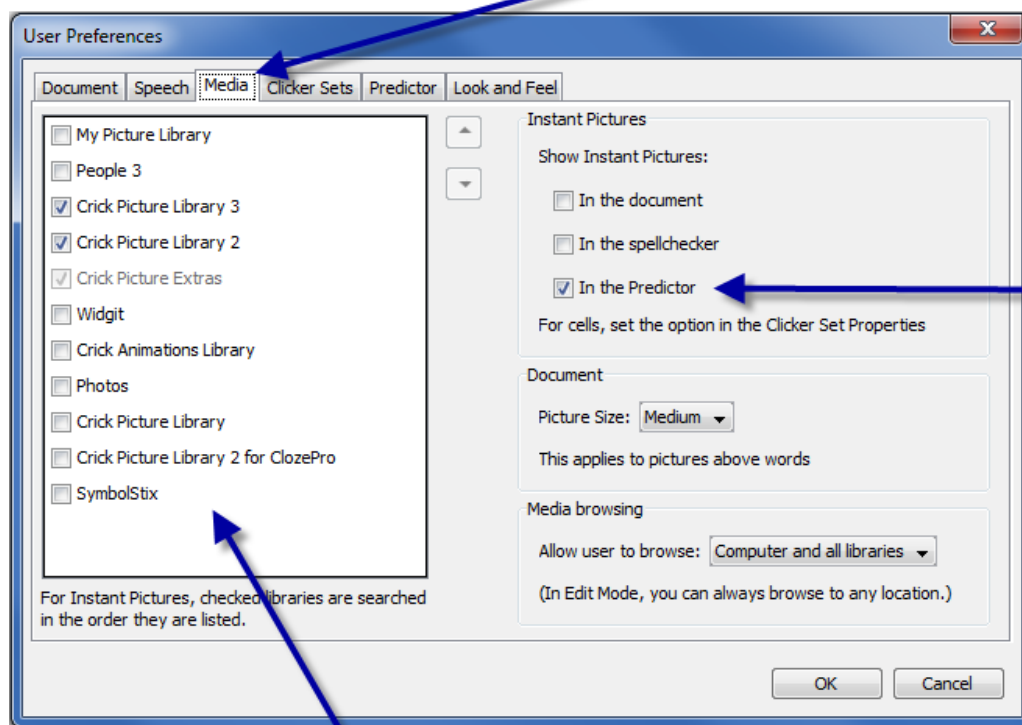
Select how many words to list in the predictor.

Choose the font settings.

Select the size of database that the words are chosen from.

Set the minimum length of words predicted, whether to predict words from the Clicker Set, and whether to predict the next word.

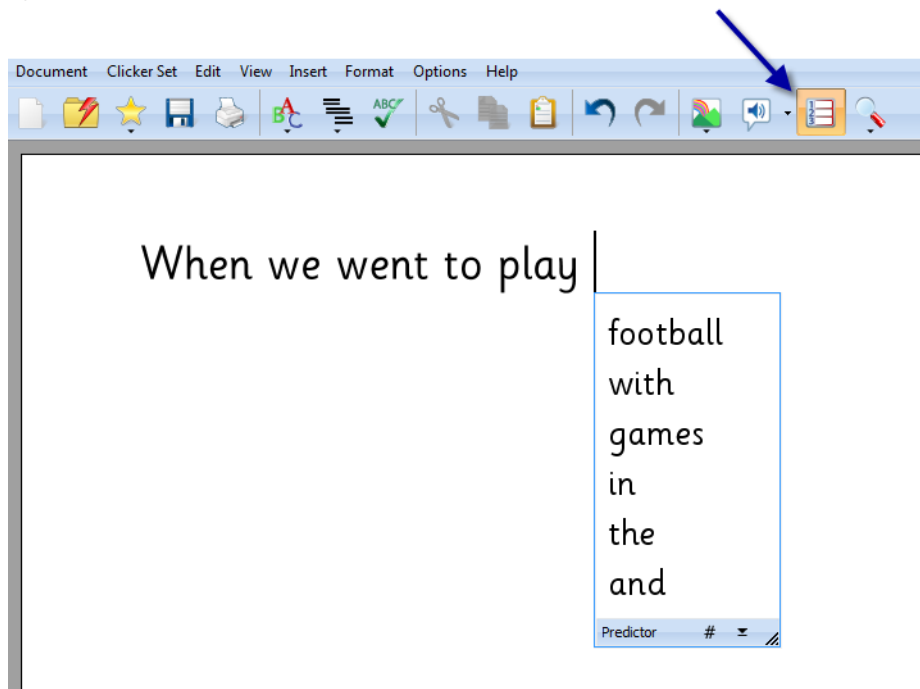
If you wish to have pictures or symbols automatically appear in the predictor, click the **Media** tab.



Select this option.

Select the libraries that you wish Clicker 6 to search for pictures and symbols in.

Once the settings are chosen, the **Show Predictor** icon in the toolbar switches the predictor on and off.



Don't forget the predictor window is resized by dragging the bottom right corner.